



NOËL & MARQUET  
DESIGN ELEMENTS



7

# Facade decoration

Installation manual

05-2025

# Window sill profile



## LAYING SURFACE

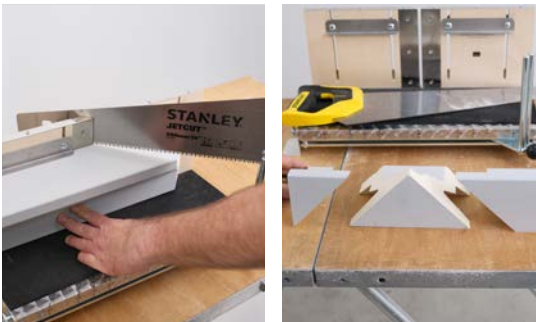
- Stable, clean, dry, free of dust, degreased and flat.
- Check existing wallpaper for adhesion.
- Prime highly absorbent surfaces.
- Prime the wood.
- Prime the metal.
- Clean tiles.
- Roughen coated surfaces.

## PREPARATION

- Determine and mark the position (bubble level, chalk line).

## ANGLED SECTION

- Cut the angled section to size for the right side of the window sill profile (saw, mitre box or electric mitre saw).



- Lightly sand the cut edges and the edges with sandpaper or cutter.



- Remove the sawdust with a damp sponge.



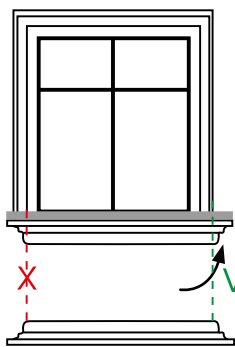
- Using a cartridge gun, generously apply the DOMOSTYL® HYBRID adhesive in a continuous bead on the backside (see GLUE CONSUMPTION).



- Install angled section.

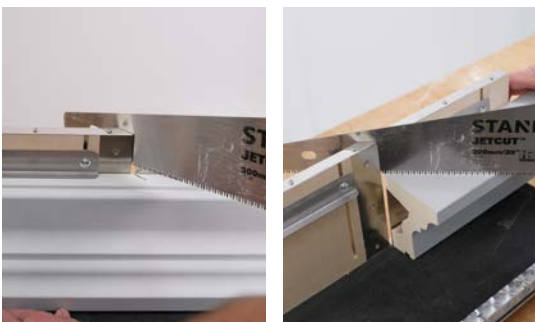


- Turn right-angled window sill profile with the lower edge upwards and mark the appropriate length on the lower edge.



WINDOW SILL PROFILE ANGLED ON BOTH SIDES

- After installation, the window sill profile should be sufficiently protrude.



- Cut the left side angle of the window sill profile to size.





- Fit the left side angle, remove excess adhesive with a cloth soaked in turpentine substitute.

## Angled window sill profile



- Apply DOMOSTYL® HYBRID adhesive to the wiped adhesive surfaces of the angled window sill profile as a continuous bead, diameter 10 mm, all around (see GLUE CONSUMPTION).



- Fit the window sill profile, if necessary, use nails to prevent the window sill profile from slipping.



- Install professionally the metal or stone window sill.

# Frame profiles



- Position the frame profile (let it protrude by approx. 2 mm) and mark the position (spirit level).



- Cut the frame profile to fit the mitre (saw and mitre box or electric mitre saw).



- Apply DOMOSTYL® HYBRID adhesive to the back of the profile all around as a continuous bead (diameter 10 mm) (see GLUE CONSUMPTION).



- Apply DOMOSTYL® HYBRID adhesive to the gluing surfaces and mitre cuts (liberated from sawdust). The surface should be completely covered with the adhesive. The adhesive joint must be formed so that it has a width of 3 mm after completion.



- Install frame profiles, butt joints and mitre joints with DOMOSTYL® HYBRID adhesive. After drying (approx. 24 hours), fill the adhesive joints again with DOMOSTYL® HYBRID adhesive.





- Joint professionally with DOMOSTYL® HYBRID adhesive the frame profiles including the protruding edge in the area of the window jam.



- After the joints have dried (approx. 24 hours), smooth the window reveal along the protruding edge of the frame profile, which has been grouted with DOMOSTYL® HYBRID adhesive, with a facade filler.



- After drying, coat the facade profiles 2 times with pure acrylate based facade paint (see FINISH).

# String course



- Install in the same way as the window sill profiles, the joint in the upper area of the belt cornice must be formed into a groove.

## Cut in the profile (downpipe)



- If cuts have to be made, they can be cut straight, in which case the cut edge is sealed with DOMOSTYL® Hybrid adhesive. It is also possible to angle the profiles on both sides.

## Key stone



- Determine and mark the position of the key stone (spirit level).





- Measure the course of the cut (protractor).



- Adjust the course of the cut in the mitre box or electric mitre saw.



- Mark the course of the cut on the frame profile. Cut frame profiles to size.



- Mount the keystone, if necessary fix it with a nail.







- Cut the frame profiles to size and then mount.



## Area of the roof overhang and passage



- There are 2 possibilities. 1) Window sill profiles run parallel to the roof overhang and verge. 2) Window sill profiles run horizontally at the gable. In both cases, the mitres are cut with a 45° cut setting.



- If an additional frame or window sill profile is to be installed in the gable area, the cutting angle must be measured with a protractor (positioning angle) and the profile cut to size.



# Gable



- Define and mark the position and size.



- Measure the angle, set the mitre box or electric mitre saw and cut the pointed gable.



- Mount the pointed gable.



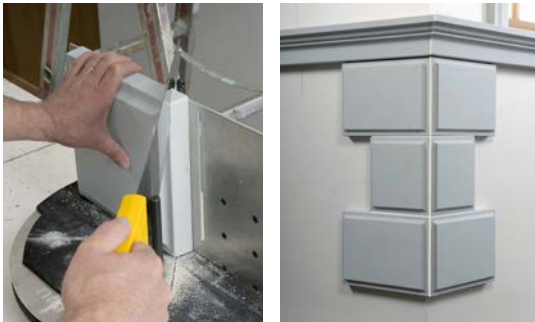
- Cut the side parts to size and assemble.



# Stones



- Define and mark position.



- If you want the stones to border the corner of the house, there are 2 possible cuts.

1) Cut the corner stones so that the chamfer remains visible, or



2) Cut the chamfer away.



- The butt joints and mitre joints must be glued and grouted with the DOMOSTYL®HYBRID adhesive.





- Stones can be installed in offset, row or interspersed.



## Ceiling Roses



- ARSTYL® ceiling roses and pilasters may also be used outdoors.
- Before installation, the back of the products must be primed with solvent-based synthetic primers.
- After drying, they are mounted and grouted with DOMOSTYL® HYBRID adhesive. After they have dried again, they must be painted twice with pure acrylate-based facade paint.

# Repair of damaged profiles



- Minor damage can be filled with DOMOSTYL® HYBRID adhesive.



- Major damage, straighten.



- Cut a piece to the appropriate size (use a profile of the same reference).



- Adjust the piece, glue with DOMOSTYL® HYBRID adhesive and fill in. After drying, paint with pure acrylate-based facade paint (see FINISH).